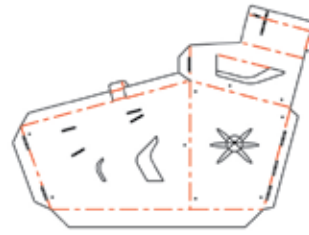


# Space Shuttle

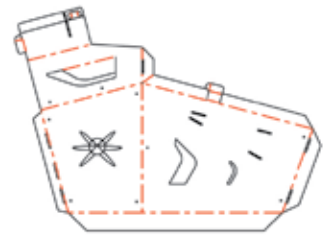
contactus@boxcreations.com



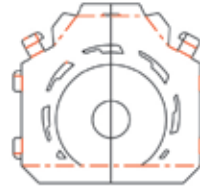
Part A: Left Side Panel



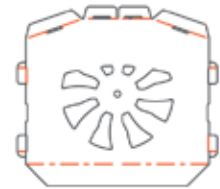
Part B: Right Side Panel



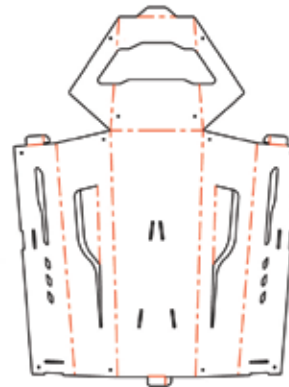
Part C: Rear Panel



Part D: Front Panel



Part E: Top Panel



Part F: Nose



Part G:  
Fin (3)



**⚠ WARNING:**  
**CHOKING HAZARD** - Small parts.  
Not for children under 3 yrs.  
Highly Flammable - Keep away from fire.  
Keep away from wet or moist conditions  
as it will affect the structural integrity of  
the product.

**\*4 Markers Included**  
Non-Toxic / Washable Ink

## CONSTRUCTION BASICS:

### Folding Tabs



Locate Tab  
and slot



Fold Flap

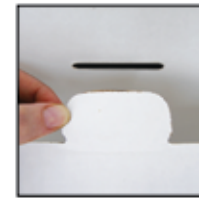


Insert Tab



Open Flap

### Straight Tabs



Locate Tab  
and Slot

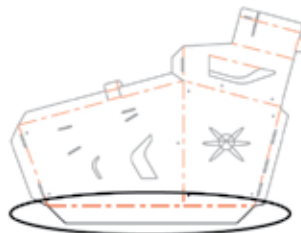


Insert Tab and  
Pull Through From  
Opposite Side

### Creases

-----  
Creases are shown by dashed lines.  
These are the lines that will be folded.

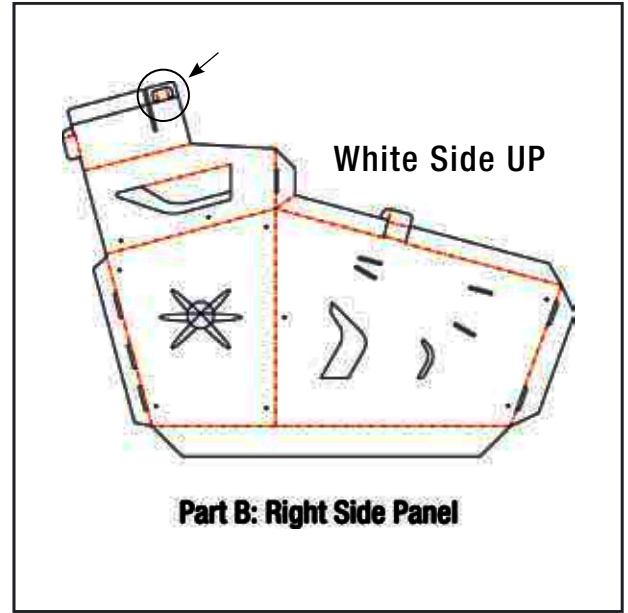
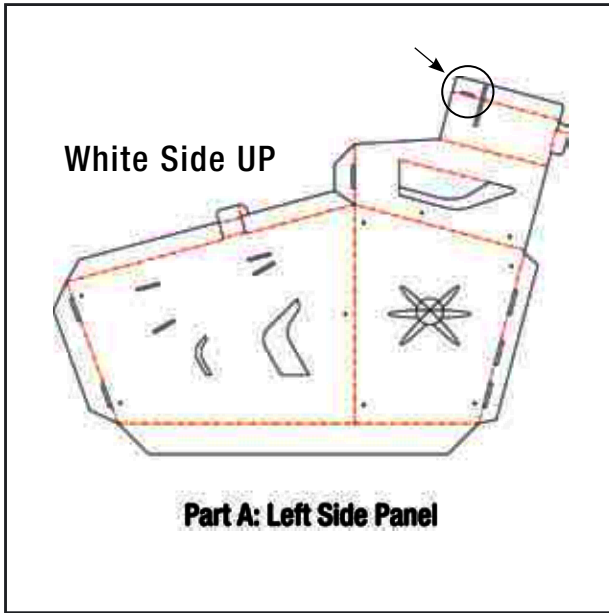
### Base Support Folds



Fold the bottom flaps  
of panels A,B,C, and D  
towards the inside of  
the Space Shuttle.  
**THIS FOLD IS  
IMPORTANT FOR THE  
STABILITY OF THE  
STRUCTURE.**



# Space Shuttle Instruction Booklet

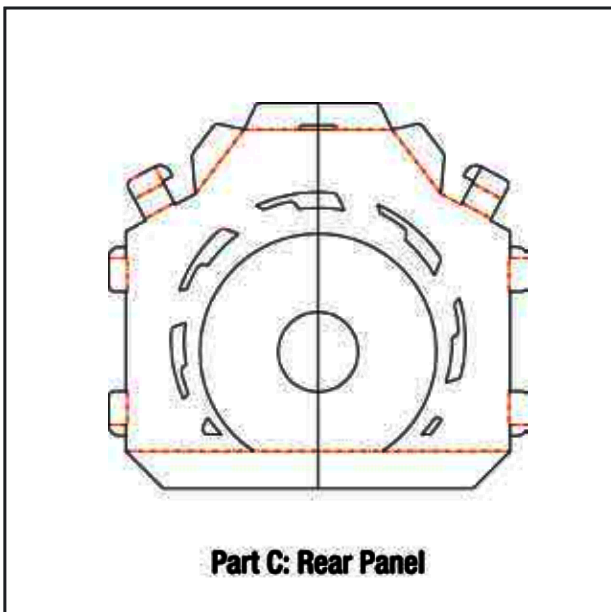


## Step 1

Locate Part A. This is the side panel with the *slot*. (Circled above) Pre-fold along all crease lines for easier construction.

## Step 2

Locate Part B. This is the side panel with the *tab*. (Circled above) Pre-fold along all crease lines for easier construction.



## Step 3

Locate Part C. Pre-fold along all crease lines for easier construction.

## Step 4

Lay Part A and Part C on floor with the white sides down. Be sure to fold the base supports.

# Space Shuttle Instruction Booklet

---

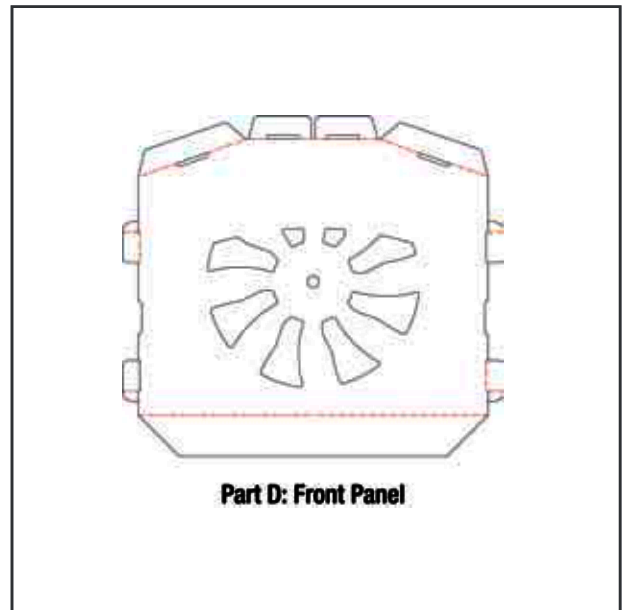


## Step 5

With the brown side up, take the smaller end of Part A and attach it to one side of Part C using the folding tabs.

## Step 6

Repeat steps 5 to attach Part B to Part C. Your assembly should resemble the above picture.



## Step 7

Stand these 3 parts upright. The top portions of Parts A and B will fold in towards the center of the Space Shuttle.

## Step 8

Locate Part D. Pre-fold along all crease lines for easier construction.

# Space Shuttle Instruction Booklet



## Step 9

Attach Part D to Parts A and B by inserting the bottom tab before the top tab for easier construction. Notice that the top flaps on Part D slide *underneath* Parts A and B.



## Step 10

While standing inside the Space Shuttle, insert the tab from either Side Panel into the center slots in Part D. Fold end flap so it fits in gap on Part D.



## Step 11

Locate folding tab on Part B.

## Step 12

Fold back ears on folding tab and insert into slot on Part A. Unfold the ears to lock Parts A and B together.

# Space Shuttle Instruction Booklet

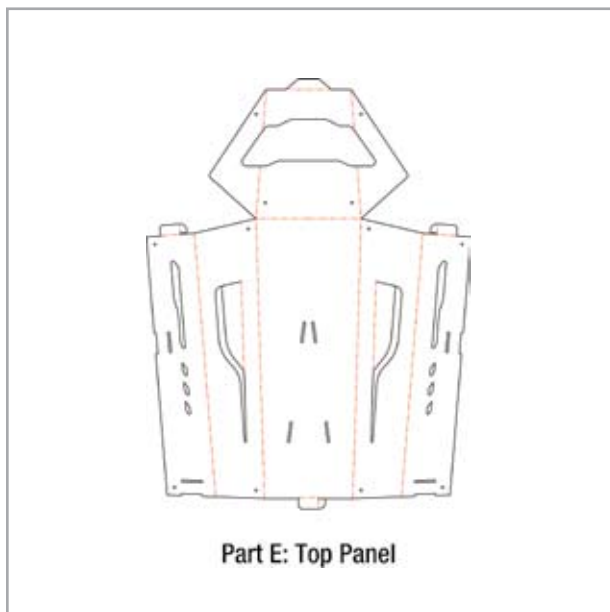


## Step 13

Press down the folds on Parts A, B, and C as shown. These will act as supports for the Top Panel.

## Step 14

At this point, your assembly should match the above image.



## Step 15

Locate Part E. Pre-fold along all crease lines for easier construction.

## Step 16

After pre-folding, it is important to take the outer side panels and fold them **backwards** towards the white side as shown above.



# Space Shuttle Instruction Booklet

---



## Step 17

Place Part E on top of Space Shuttle. Notice the proper angle of the sides of Part E. Insert the folding tab located in the middle of the back first.



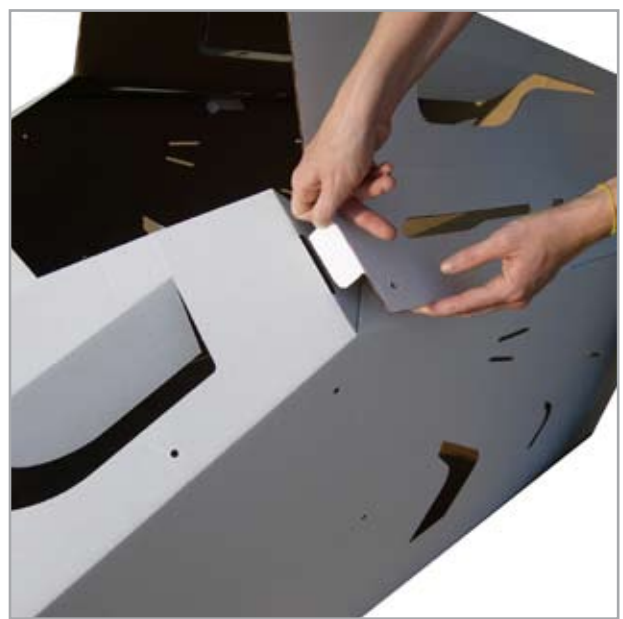
## Step 18

Next attach the Top Panel with the tabs found on the Back Panel. These tabs fold once then are inserted into slot as shown.



## Step 19

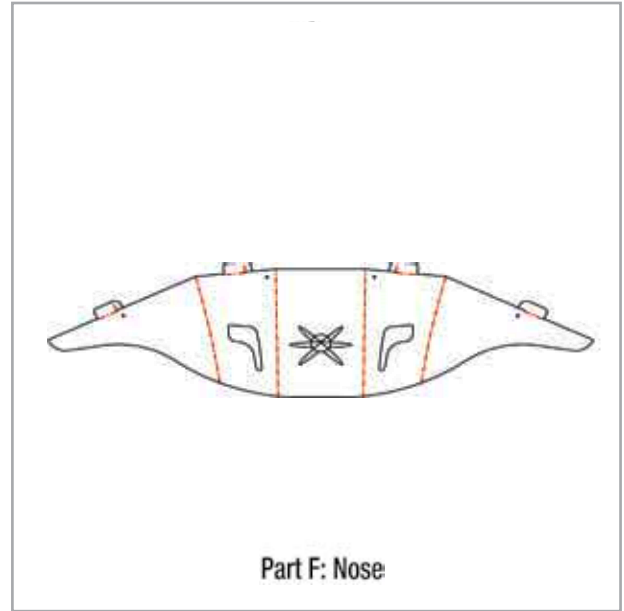
Next, attach the Top Panel with the tabs found on the Side Panels.



## Step 20

Finally insert the tab on the front of the Top Panel.

# Space Shuttle Instruction Booklet

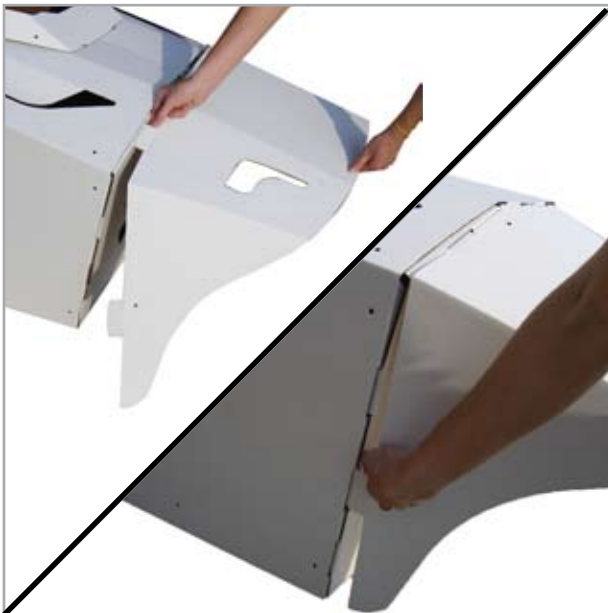


## Step 21

Fold hatch down. Bend tab located at the front of the hatch. Insert tab into corresponding slot. Your assembly should match the above image.

## Step 22

Locate Part F. Pre-fold along all crease lines for easier construction.



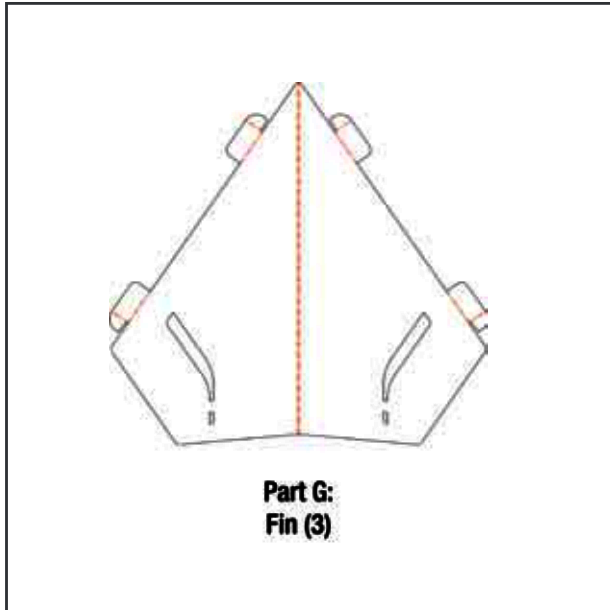
## Step 23

Attach Nose starting with the top tabs first. The slots are located on the Front Panel D. Fold the sides of the nose down and insert the bottom tabs into the remaining slots on Panel D.

## Step 24

Fold in view ports if you have not done so already.

# Space Shuttle Instruction Booklet



## Step 25

Locate Part G. There are three of these parts. Pre-fold along crease line.

## Step 26

Take Fin and insert its tabs into the slots on the Side Panel. Start with Fin opened and the bottom tab first. Fold Fin over and insert the remaining tabs.



## Step 27

Repeat step 26 with the remaining two fins. One on the other side and one on the top.

## Step 28

Your Space Shuttle is complete. Enjoy!