

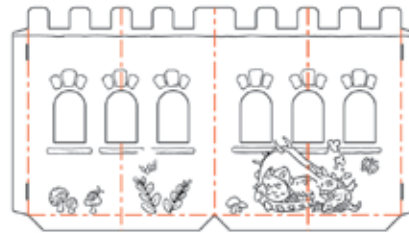
# Medieval Castle

contactus@boxcreations.com

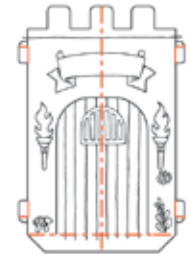
**⚠ WARNING:**  
**CHOKING HAZARD** - Small parts.  
 Not for children under 3 yrs.  
 Highly Flammable - Keep away from fire.  
 Keep away from wet or moist conditions  
 as it will affect the structural integrity of  
 the product.



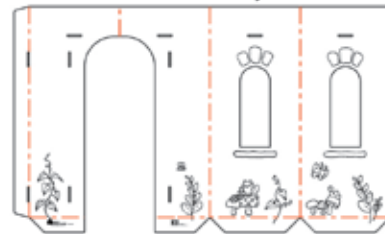
Part A:  
Main Wall



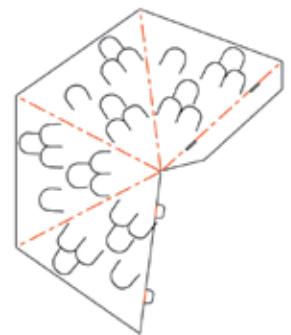
Part B:  
Drawbridge (2)



Part C:  
Turret Body



Part E: Roof



Part D:  
Turret Top (2)



**\*4 Markers Included**  
 Non-Toxic / Washable Ink

## CONSTRUCTION BASICS:

### Folding Tabs



Locate Tab  
and slot



Fold Flap

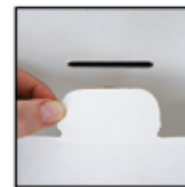


Insert Tab



Open Flap

### Straight Tabs



Locate Tab  
and Slot



Insert Tab and  
Pull Through From  
Opposite Side

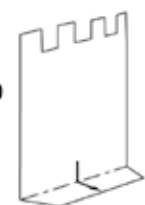
### Creases

Creases are shown by dashed lines.  
 These are the lines that will be folded.

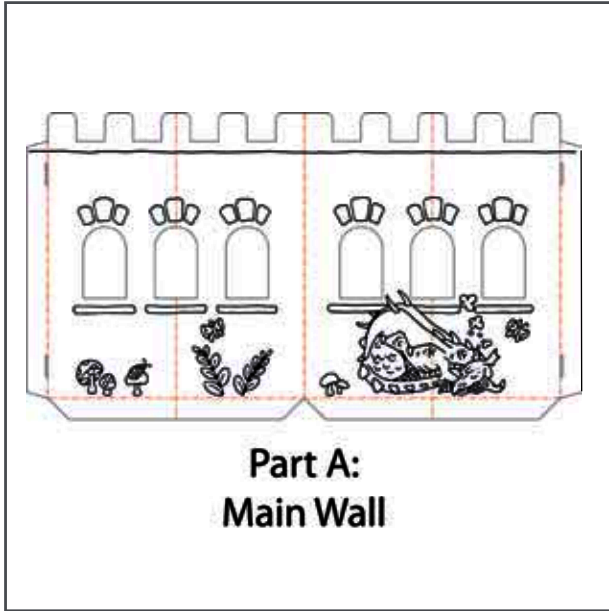
### Base Support Folds



Fold the bottom flaps  
 of panel "A" towards  
 the inside of the  
 playhouse. **THIS FOLD  
 IS IMPORTANT FOR  
 THE STABILITY OF  
 THE STRUCTURE.**



# Medieval Castle Instruction Booklet

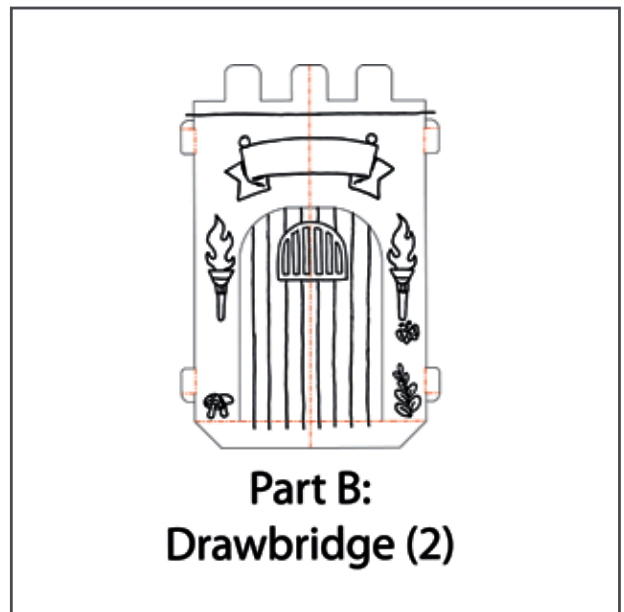


## Step 1

Locate Part A. There are two of these parts. Pre-fold along all crease lines for easier construction.

## Step 2

Be sure to fold the base support to the inside of the main wall.



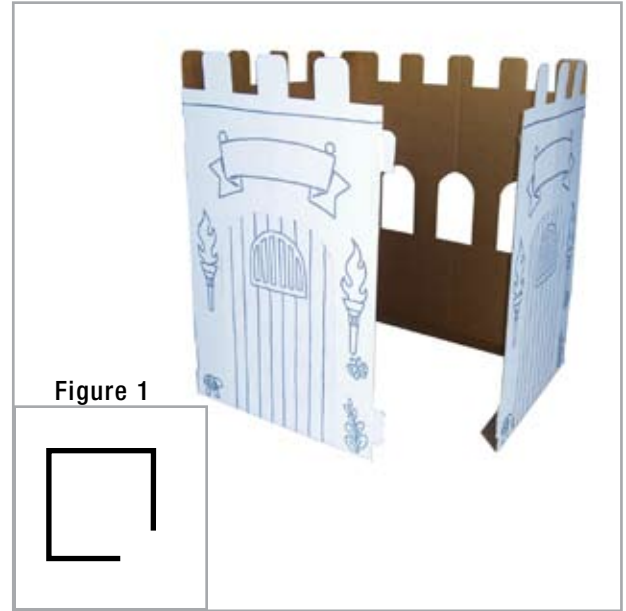
## Step 3

Stand up Part A so the the two panels make a 90 degree angle.

## Step 4

Locate Part B. Pre-fold along crease lines for easier construction.

# Medieval Castle Instruction Booklet

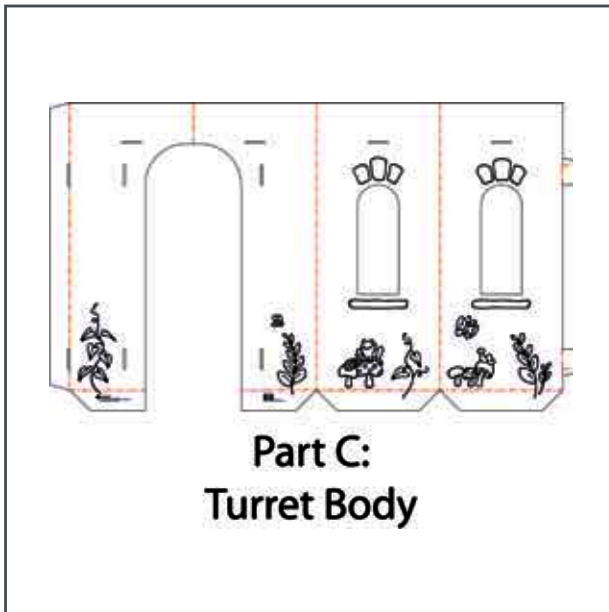


## Step 5

Connect Part B to Part A using the folding tabs.

## Step 6

Repeat step 5 using the other side of Part A and the remaining Drawbridge Panel. Arrange parts so the top view resembles the drawing in figure 1.



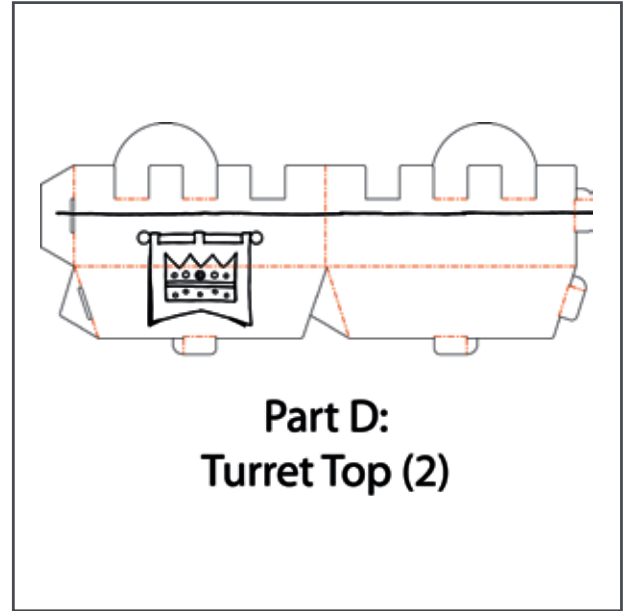
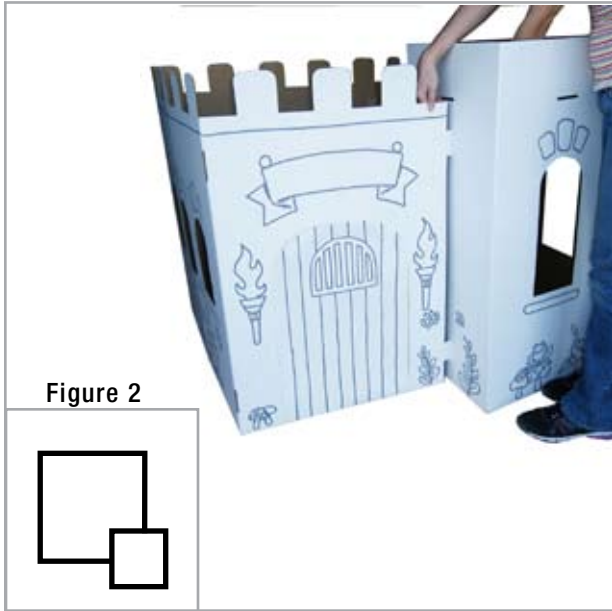
## Step 7

Locate Part C. Fold along crease lines for easier construction.

## Step 8

Fold Part C together so it is free standing. Connect using the folding tabs.

# Medieval Castle Instruction Booklet



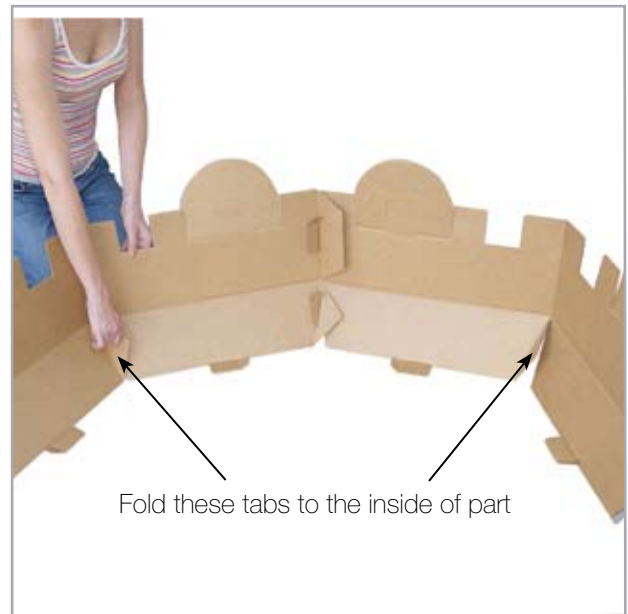
## Step 9

Attach Part C to both sides of Part B as shown above. When assembled, the top view should resemble the drawing in figure 2.



## Step 10

Locate Part D. Fold along crease lines for easier construction.



## Step 11

Lay both parts onto the floor. Attach parts using the top folding tab first, then the bottom.

## Step 12

Stand two parts upward. Be sure that the triangular flaps are to the inside of the assembly.

# Medieval Castle Instruction Booklet

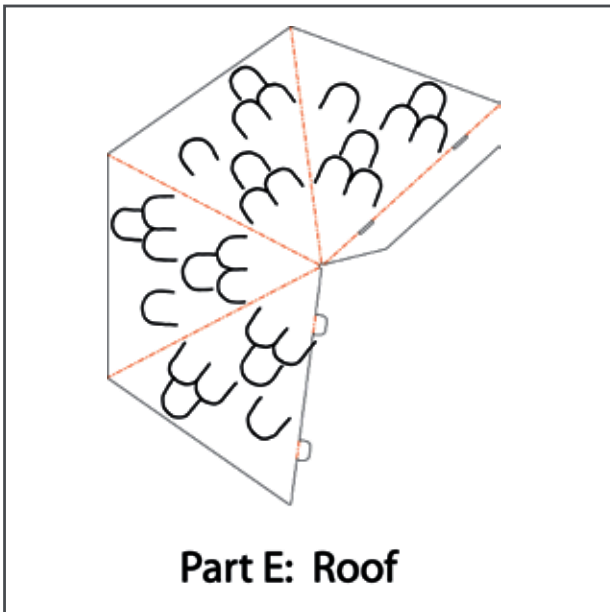


## Step 13

Attach the remaining ends. Insert top tab first, then insert bottom tab.

## Step 14

Using the four folding tabs, attach the bottom of Part D to the top of Part C.



## Step 15

Locate Part E. Fold along crease lines for easier construction.

## Step 16

Fold Part E into a pyramid and attach using the straight tabs. Pull tabs through from the other side to lock securely.

# Medieval Castle Instruction Booklet

---



## Step 17

Fold down support flaps located at the top of Part D. Next, place Part E on Part D so that it rests on the support flaps.



## Step 18

Your Castle is complete. Enjoy!