

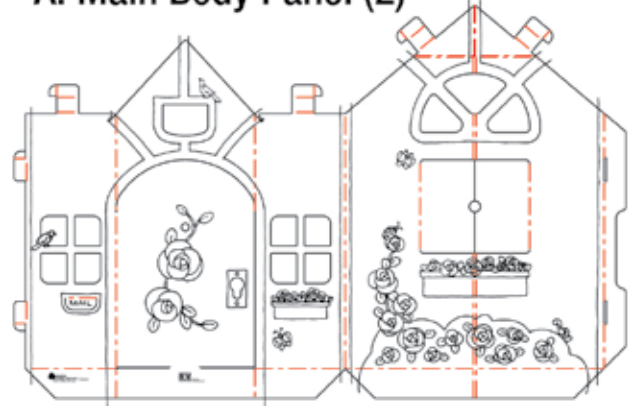
Cottage Playhouse

contactus@boxcreations.com

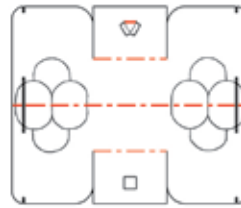
⚠ WARNING:
CHOKING HAZARD - Small parts.
Not for children under 3 yrs.
Highly Flammable - Keep away from fire.
Keep away from wet or moist conditions
as it will affect the structural integrity of
the product.



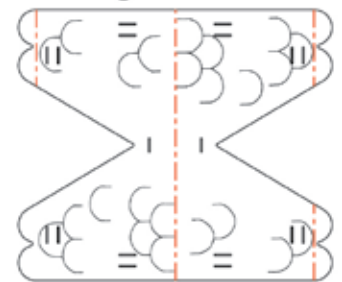
A. Main Body Panel (2)



B. Small Roof



C. Large Roof



D. Chimney



***4 Markers Included**
Non-Toxic / Washable Ink

CONSTRUCTION BASICS:

Folding Tabs



Locate Tab
and slot



Fold Flap

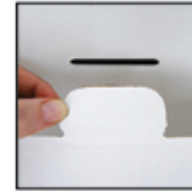


Insert Tab



Open Flap

Straight Tabs



Locate Tab
and Slot



Insert Tab and
Pull Through From
Opposite Side

Creases



Creases are shown by dashed lines.
These are the lines that will be folded.

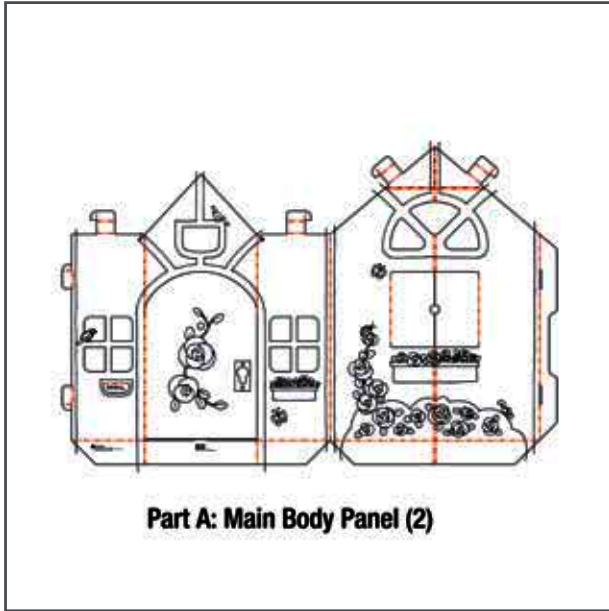
Base Support Folds



Fold the bottom flaps
of panel "A"
towards the
inside of the
playhouse. **THIS FOLD
IS IMPORTANT FOR
THE STABILITY OF
THE STRUCTURE.**



Cottage Playhouse Instruction Booklet

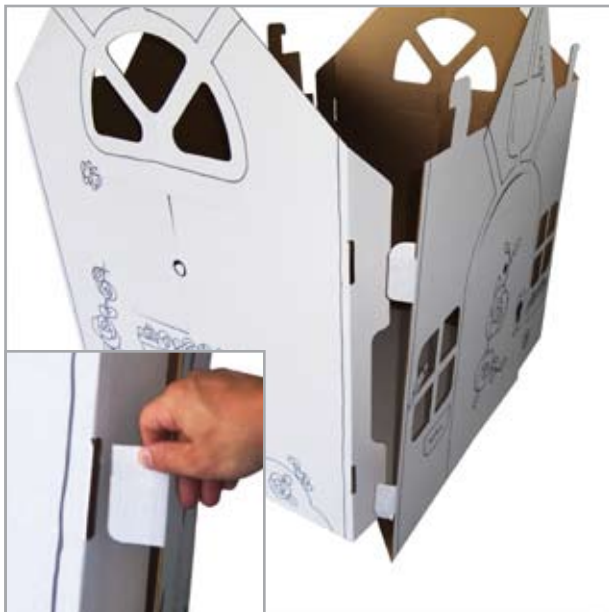


Step 1

Locate Part A. There are two of these parts. Pre-fold along all crease lines for easier construction.

Step 2

Stand up one panel, using the bottom flaps for support.



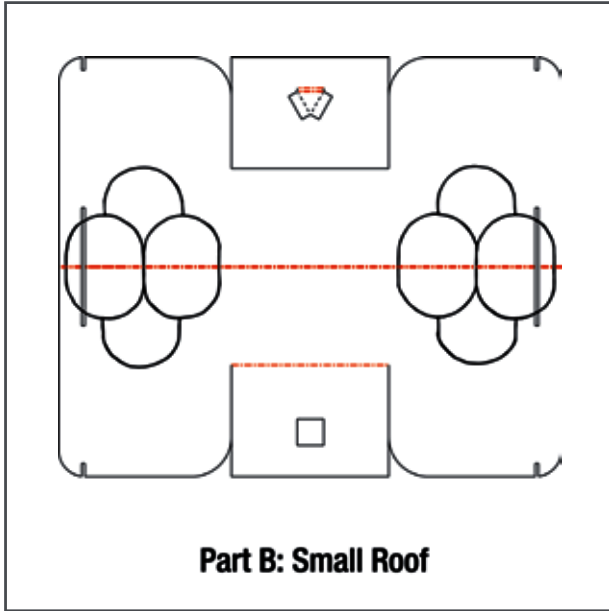
Step 3

Stand up the second panel and line up the slots and tabs as shown. Insert both tabs into slots.

Step 4

Repeat step 3 with the opposite corner of Cottage. Your Cottage should match the picture shown above.

Cottage Playhouse Instruction Booklet



Step 5

Locate Part B and fold along creases for easier construction.



Step 6

Fold inner flaps together so that they overlap and push winged tab through the square opening to lock the flaps together.



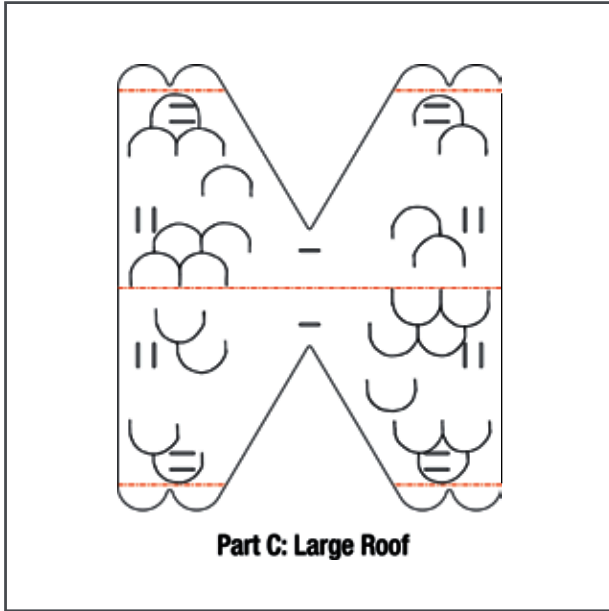
Step 7

Part B will match the image above when assembled.

Step 8

Place Part B on top of the peaks above the doorways. Align and insert the slots in Part B into the slots in Part A.

Cottage Playhouse Instruction Booklet



Step 9

Locate Part C and fold along creases for easier construction.

Step 10

Align the slots in Part C over the tabs in Part A. Bend the tabs down towards the inside of Cottage, then up through the outermost slot in Part C.



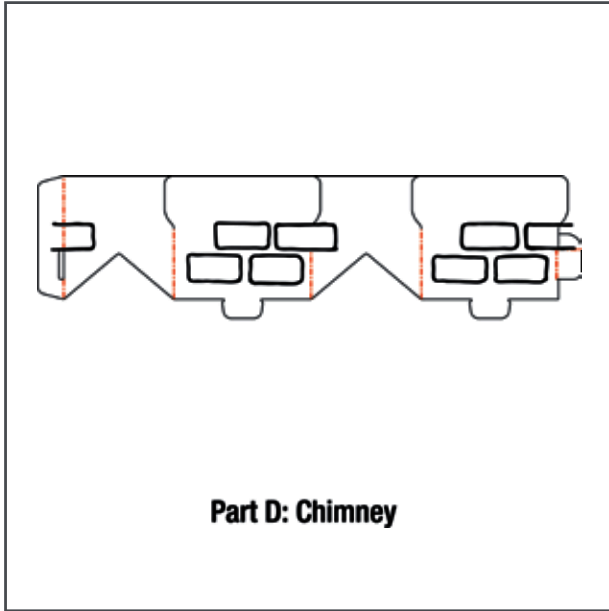
Step 11

Pull all tabs through the outermost slots.

Step 12

Fold in the ear of the tab and insert into the second slot as shown.

Cottage Playhouse Instruction Booklet

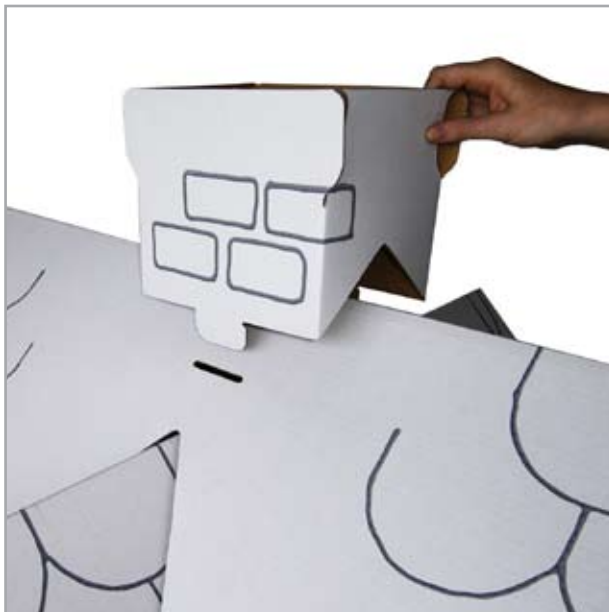


Step 13

Locate Part D and fold along creases for easier construction.

Step 14

When assembled, part D will match the above picture.



Step 15

Align the tabs on Part D with the corresponding slots on Part C. Insert tabs directly into slots without bending them.

Step 16

Your Cottage is now complete. Enjoy!